

NEWSLETTER 95 January 1994

Flats in Castle Street

In our last issue we said that permission had been granted for the demolition of a building at the east end of Castle Street and the construction of 9 self contained flats.

This was not completely true: the Planning Committee considered the application and used that lovely expression "minded to grant." They held off making a final decision pending negotiations about the setting back of the roof. However, it seems highly likely that the scheme will go ahead.

The creation of 9 new residential units will put considerable pressure on parking. It has been agreed that when the residents' parking scheme is reviewed Castle Street will a "matter of priority."

SOCIETY CONTACTS

CHAIRMAN Harold Lawson tel 328203
SECRETARY Richard Pau: tel 326711
TREASURER Brian Smith tel 325175
NEWSLETTER EDITOR Roger Hinton tel 321794

Seven Day Trading - Six Day Traffic Rules

Like it or not, it does seem that Sunday trading is on the way. Take a stroll down Western Road next Sunday and you will find a number of stores open. You will also find quite a few people, and their cars on the pavements.

On Monday to Saturday cars are not allowed in Western Road during shopping hours. Nor are they allowed to park in residents spaces.

On Sunday anything goes: cars can drive down Western Road; there are no wardens on duty so they can park on the pavement without fear of penalty; and they can also park on residents spaces in neighbouring streets.

Residents in Clarence Square are suffering particularly from this problem because their residents' parking bays are so close to the shops.

The problem is less noticeable in Regency square. Being near the front, residents there have always had to accept that they were likely to lose their space if they moved their car on Sunday.

Surely areas with significant numbers of visitors on Sunday should have their resident bays operating every day. We are trying to find out if the Council has any plans to change the rules in this area.

Free Parking in Russell Square

If you want to park free of charge in Russell Square you can put your car on the large piece of pavement at the eastern end. Mind you, make sure you only leave it overnight: if it's there during the day when the wardens are on duty it may get a ticket. Two cars were recently towed away.

Technically speaking the police could give you a ticket at any time. But that doesn't seem to be a real problem. One evening recently one of our members asked two passing policemen if there was any chance of a car that was there being booked? They said that they had more important things to do.

We have written to the chief officer at John Street Police Station to see if we can get official confirmation that parking there is OK.

After all, if pavements are left clear, people only walk on them!

Proposals for Re-cycling Centre near Regency Square wins Overwhelming Support

or words to that effect!

Such was the impression given by the Council when they wrote to everyone in the area recently to try and find a suitable location for a recycling centre.

What they actually said was that many people replying to a recent questionnaire had supported the idea. So we asked them how many.

The answer was five. And that was not just from our area but from the whole of Regency ward, which runs from the Hove border to the Old Steine..

How to get out of Preston Street (official !)

Lot's of drivers seem to be confused about which way they can and can't go if they are driving up Preston Street.

The official answer is that between 9 am and 6 pm Monday to Saturday you must turn right into Stone Street. Which means of course that you then come back along Castle Street and either end up going round in circles or give up and go down Preston Street to escape.

All of which seems rather silly since cars coming into Western Road from Hampton Place (by the Post Office) are permitted to turn right.

Officialdom has apparently seen sense. Although the rules at present make it illegal to turn left at the top of Preston Street, they will shortly be changed to make it legal.

KEEP ON PHONING

Don't forget to phone the Council if you find rubbish dumped in the street. The free number to call is

0800 525573.

We're Losing our Soil

When the road was re-surfaced in Russell Square some of the kerb stones around the green were damaged. As a result soil is escaping onto the roadway on the south side of the Square.

We are pressing for prompt action from the Council.

In the Hole ?

The wind blew so hard during the Christmas period that our Christmas tree was almost blown over. It spent its last few days at a rather precarious angle.

But it was not entirely the wind's fault.

One of the Society's less well known assets is a hole in the ground at the top of Regency Square. It was constructed at considerable expense, specifically to hold Christmas trees. But when not in use it has to be covered up to stop anyone tripping over it. The Council workmen who put the tree up this year did know it was there. So they just stuck the tree in the ground.

Fortunately they made such a good job of the guy ropes that it did not topple over completely in spite of the wind.

In 1925

... Brighton was a popular holiday resort and Regency Square was full of hotels, probably more so than today.

We have recently obtained a copy of some pages from the 1925 Brighton holiday guide. So we thought it might be interesting to publish some of the advertisements for Hotels in this area.

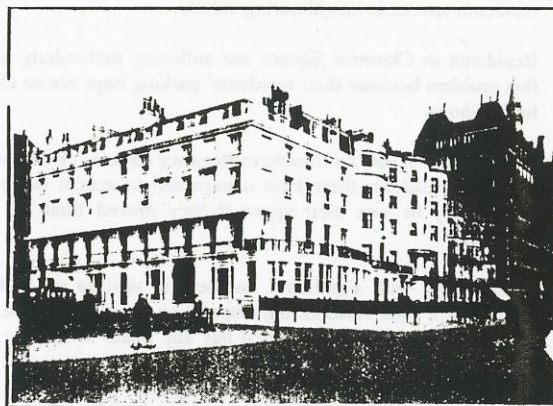
We start with Grahams Private Hotel. From the photograph this splendid establishment with its French speaking proprietor seems to have occupied numbers 11, 12 and 12A on the west side of Regency Square.

Although the photograph is not very clear, it would seem that in 1925, the brickwork above the ground floor had not yet been painted over. Originally all houses in the Square had unpainted brickwork but now there are only a very few left, most notably those in the centre of the north side.

ABBOTT'S HOTEL KING'S ROAD BRIGHTON

The most commanding corner position on the Brighton Front

Immediately opposite the WEST PIER, and having unrivalled views of the magnificent sunsets over the Channel, also overlooking the PRIVATE TENNIS COURTS, to which visitors have the right of entry



THIS Private Hotel is probably the most up-to-date on the Front—ELECTRIC PASSENGER LIFT—Electric Light—50 Bedrooms—HOT & COLD WATER TO NEARLY ALL BEDROOMS—Gas or Electric Fires in all Bedrooms with Slot Meters—Newly Furnished—TEN BATHROOMS—Large Public Rooms with Balconies overlooking the Sea—Large Panelled Lounge with bay 55ft. wide overlooking the Promenade. Separate Tables. Moderate Terms from 3½ guineas, or 12/6 per day, including full Board, Baths, Lights, etc.

— NO EXTRAS —

Telephone: BRIGHTON 3000

Telegrams: ABBOTT'S HOTEL, BRIGHTON

For Illustrated Tariff apply

THE MANAGERESS

Power to the People

As town dwellers we get a poor deal on democracy when compared with some of our fellow citizens who live in the country.

The reason is that some country areas have parish councils. These are level of local authority below that of the Borough or District Council like Brighton and Hove.

What do they do ? A recent article described their functions as follows

representing their local community to all service providers

acting as a focal point for consultation exercises carried out by service providers

carrying out a range of minor maintenance and environmental functions

acting in a wider sense as consumer advocates.

Sounds familiar ? Well, apart from the third item it is pretty much what the Society does for this area.

But there are two important differences: firstly the Society does not represent everyone, but only those who know about it and choose to join; secondly, the Society does not have the authority or the money to carry out any maintenance or environmental work.

It could be argued that if we did we would soon find solutions to some of the problems we are always complaining to the Council about, rubbish in the streets being the most obvious.

Fairly soon the structure of local government in this area will be reviewed and the general view is that Brighton Borough Council will be enlarged to cover a bigger area. That could mean it becomes more remote, and even less responsive to local problems than it is now.

So perhaps we should have the urban equivalent of a parish council to deal with really local issues ? We have written to Sir Derek Spencer, our local MP to find out what he thinks about the idea.

What do you think ?