



REGENCY SQUARES COMMUNITY

AUTUMN NEWSLETTER



NOVEMBER 2024



THE GARDENS

We hope everyone is wrapping up warm while the cold snap has blown in and hope you've had a brilliant autumn as the songs of Christmas linger faintly on the air and grow ever closer!

Susan Dawes has provided some fantastic news and updates regarding our beautiful garden and both herself and her trust volunteers continue to work hard at keeping our green space in the community beautiful!

SUE DAWES
RSC GARDENING GROUP LEADER



I have taken over running the gardening volunteer group for the time being after the sad death of Gill Wales who played such a prominent part in tending the garden squares in recent years and who planned an extensive re-planting of the south (long) border last year. Some of those plants are thriving but it is 'touch and go, will it grow?' experiment learning which plants will withstand the sea wind and exposed cold of the winter alternating with the heatwaves of summer.

I am determined, with just one other volunteer, Duncan who travels from Worthing to help me, to persevere with eradicating grass and weeds from that border and continuing to introduce new plants when they are available. The RSC has funded the purchase of hundreds of new daffodil and tulip bulbs to make a splash come the spring and have planted many clumps of day lily donated by a kind friend from his garden.

I am hoping to encourage some more volunteers to come join me from the spring when it is seen what can be achieved. I encourage those who cannot help to make a small contribution to plant purchasing funds. It has to be said it is hard work at the moment with so many empty spaces which fill up with grass and weeds very quickly but should get easier as we fill in with more plants.

George has also kindly volunteered to manage the compost bins which is another unseen task which Gill undertook on a regular basis

I love gardening and the fresh air and exercise I am sure are good for my mental health along with the sense of small

achievements. I had been working in the garden last week for about 3 hours when a group of young people appeared to play frisbee. I am always happy to see the garden used as a recreation space. One young man however, went to run across the border where I had been planting bulbs and I shouted at him not to walk on the garden in no uncertain terms whereupon he hot footed it on to the path.

I hope that with a little effort the square becomes a source of pride for residents and engenders more respect from the litter bugs, doggy poopers, bottle throwers and fag end droppers. I live in hope.

Sue Dawes



SUE DAWES

At the last AGM a request was made to introduce members of the Regency Squares Community's committee in the newsletter so we're continuing with the wonderful, Susan Dawes! - **RSC Gardening group leader.**

Sue leads the gardening group and writes the minutes. Sue moved to Brighton in June 2021 after a distinguished marital career and three children raised. Known to make the best cheese scones on the planet, sue enjoys cooking, gardening and Theatre having been a prolific and keen amateur actor in a past life.

Luckily all these activities can be accessed a stones throw from Regency Square and she thinks that this must be the best place ever to live.

Sue can be seen taking a regular dip in the sea throughout the year and is a competent upholsterer, running a small business commuting one day a week to Havant. She is also blessed with three grandchildren who she is delighted live in Brighton too and who regularly visit Grandma who lives by the i360 tower.



SUE ON BRIGHTON SEAFRONT



MARY CLARKE

Today over 100 years of women getting the vote there are very few named statues to women. Despite their many achievements women have been hidden from history. We mentioned before the possibility of a statue to the Channel swimmer Mercedes Glitz, on Brighton sea front. It is now time to introduce you to Mary Clarke. Mary was a suffragette, the younger sister Emmaline Pankhurst and the first woman to die in the cause of Votes for Women.

After escaping from a violent marriage Mary came to Brighton to live with Minnie Turner at her boarding house Sea View 13 Victoria Road. Here she co-founded the National Women's Political Union (Suffrage movement) and helped build it in South East England. In 1910 she organised the General Election campaigns.

Despite being physically slight and gentle, she was extraordinary brave. At an event in Bournemouth the women were violently heckled and had rotten apples thrown at them. Mary managed to escape from the mob, but saw that her friend was being attacked. She returned to help and was subject to kicks and blows. Another witness recalled that the hecklers were shouting "Throw her over a cliff!" Things were so that Mary said "Prison is the only place for self-respecting women."



Mary attended the notorious 'Black Friday' events on 18th November 1910, where, over a six-hour period, 300 women outside Parliament were brutally beaten and deliberately sexually assaulted by uniformed and plain-clothed police, almost certainly acting on Home Office orders. Mary was injured and deeply distressed, remaining bedridden for the next three days.

She left her bed and returned to London with Minnie Turner to protest about the police's actions. When she heard others of the deputation had been arrested, including her sister Emmeline, she deliberately broke a police station window, almost certainly her first illegal act. She was imprisoned for one month, her third and final period in gaol.

Despite her frailty, when in prison Mary went on hunger strike and was forcibly fed. This cruel and illegal process caused terror, acute pain and often long-term injury.



Mary Clarke 1862 - 1910

After her release from Holloway prison on 23rd December 1910, she attended a Welcome Meeting in London she then travelled to another meeting in Brighton before returning to London to spend Christmas at her brother's house. Two days after release from prison, on Christmas Day 1910, she collapsed and died of a brain haemorrhage. She was buried quietly in a family plot in London. John Clarke, to whom she was still legally married, inherited her small estate of sixty pounds.

To honour this remarkable women and her association with Brighton, a commission has been awarded to the sculptor Denise Dutton. Who has completed a bronze maquette (scaled model) as well as a lighter resin copy. The statue is to be placed in Pavilion Gardens which has strong the ties to the Suffragette movement

**To donate search Mary
Clarke Statue Appeal or
[localgiving.org/donation/
mary-clarke-statue-appeal](https://localgiving.org/donation/mary-clarke-statue-appeal)**



SAVING OUR HERITAGE

Do you want to see this ...



Some of Berkeley Group's proposed 10 Tall Buildings in a 'Tall Buildings Free' Zone



Right next to this ...



The magnificent Kemp Town Estate, Brighton the country's only sea-fronting Grade I listed estate

Hopefully you will know that RSC is one of 13 societies across our city, fighting against the overwhelming high-rise proposals for the Gasworks site in East Brighton? It includes 10 Tall Buildings up to 12 storeys high in a 'Tall Buildings Free' Zone!

I was at the Council Chamber for the Council Planning Committee this summer and helped persuade the panel of 10 Councillors to vote 8 to 2 to turn the application down. Two of the three major reasons used by the Council to refuse permission were effectively from us and based on the detrimental impact to our Brighton neighbours' community. And the disastrous effect it would have on the only sea-fronting Grade I listed estate in the country - the Brighton treasure Kemp Town Estate and Enclosures.

A great win for Brighton. A great community story. One our members will be pleased to hear. BUT, the house-builder Berkeley Group has come back again and gone to Appeal, to use their big money (£800,000,000 PROFIT a year!) to trample on our city and the local

community. That community needs a legal representative at the Appeal to fight their corner – a “David versus Goliath” mismatch. The council has little funds. Crowdfunding is the community’s only chance ...

So why are they/we fighting? The council put forward three major reasons for refusal of the planning application:

1. Overdevelopment, resulting in poor living standards;
2. Too few much-needed family homes - 90% would be studio, 1 and 2 bed flats not suitable for families;
3. Being totally out of keeping with the local area of 3-storey terraced housing and with the local Heritage Assets.

And there is much more. There are no affordable homes proposed at all, which the city urgently needs. The designs, as well as being overbearing, are bland and generic. They’ve been designed to be profit maximizing only. Most will end up as overseas investments and the costly marketing is already global. There are severe doubts about Berkeley Group’s contamination clear-up record – see **<https://tinyurl.com/4w92tkst> for one example.**

Dear RSC Member - Please do have a look the video at: <https://www.crowdfunder.co.uk/p/fighting-berkeley-st-william-gasworks-appeal>

Mike Davies, RSC Planning and Heritage

For more information on the campaign so far, see the website: www.brightongasworks.org



CHRISTMAS TREE LIGHT UP!

It's back to the time of year when Christmas is on our minds! We have an official date now for the Regency Square Christmas Tree light up and the ride on the i360 to watch the official turning on of the lights!

The official light up and ride will be on Sunday, 8th at 6pm. Invitations to members have been sent out but if you are interested in attending and not received an invitation, please get in touch with us at rsc@regencybrighton.com as registration to this event is essential.



TEAM DOMENICA

We are thrilled to announce that one of our new neighbours, the Maldron Hotel in Cannon Place, has embarked on an inspiring journey by becoming an employer partner with the local charity Team Domenica.

Founded by Rosa Monckton, MBE, Team Domenica is a registered charity and a Specialist Further Education College dedicated to transforming the lives of individuals with learning disabilities. This initiative was born from the personal experience of Rosa with her daughter Domenica, who has Down's syndrome. After completing the Team Domenica employment programs, Domenica has successfully secured positions at The Grand Brighton and The Pavilion Gardens Café.

Team Domenica are spearheading a significant movement aimed at fostering inclusivity and changing the perceptions of individuals with learning disabilities within the workforce and society. Here at RSC, we are delighted and inspired by their commitment to creating more inclusive opportunities. To learn more about the impactful work of Team Domenica, please click on the following link: [Team Domenica Impact Report 2024] (<https://teamdomenica.com/wp-content/uploads/2024/11/TD-Impact-Report-2024-DIGITAL.pdf>).





The Maldron Hotel in Cannon Place.

Below: Sam, Team Domenica candidate in paid employment at Brighton i360.



Additionally, we are proud to highlight that the i360 has also welcome employees who have graduated through the Team Domenica employment pathway, further demonstrating the positive impact of this initiative in our community. Let's continue to support and celebrate the incredible work being done by Team Domenica!

CLARENCE SQUARE

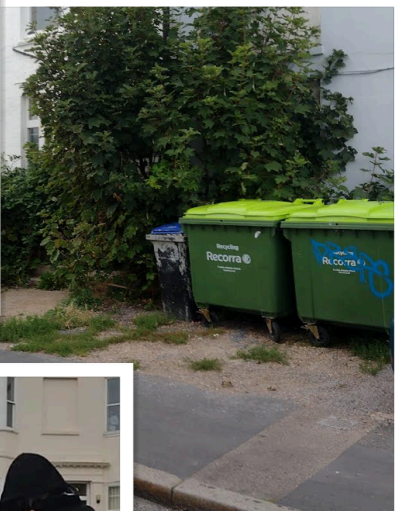
Another summer has passed and the square has survived a number of attacks by young people trying to blow up the bins, ripping leaves off shrubs and prolifically littering. It was nice to see the Council finally removing the graffiti on the bins and benches in August. There still remains a problem of people climbing over the railings after 6pm mainly to do drugs. Jeremy and I lock up after 6pm but as we are both in our 70s some new volunteers would be very welcome as we cannot continue to lock up for much longer. It would be good to preserve the peace and quiet afforded to residents, which I am sure everyone appreciates, by locking up the Square nightly. If you can help lock up or have any comments or concerns about Clarence Square please share them with us at Regency Squares Community rsc@regencybrighton.com

Two new developments are planned for the north east side of the square 32-35 (the rear of the cancer research and card factory shops) where developers hope to demolish the buildings and replace with flats on the Clarence Square side and shops on the Western Road side. If the development can build up to the pavement and get rid of the commercial bins and the semi derelict area around them where there is prolific fly tipping then the development will be welcome. At the moment it's not clear who owns the land but the Council always refuse to remove fly tipped detritus saying its "private land".

The other development involves demolishing 37-38 Clarence Square for more flats and a new shop on Western Road. Both developments plan two floors of mansard roof to squeeze in



more flats and will tower over adjacent buildings. You can comment and object to planning applications on the Council website. If anyone is wondering why there is a garden shed in front of 43-44 Clarence Square it's the owner's idea of providing a bicycle store to meet the planning requirement! We have asked the Council to replace the tree that was blown down in the centre of the square and it will be paid for out of our own funds.



BOOK LAUNCH, LOST VILLAS OF GEORGIAN BRIGHTON

November 26, 2024 6:00 PM - 7:00 PM at Fabrica. 40 Dore Street, Brighton, BN1 1AG.

One of the Regency Square Communities (late) members Gill Wales had been working on a fantastic new publication, *Lost Villas of Georgian Brighton*. Its a 'detailed account of around 15 villas: the stories of their origins, ownership and residents from the end of the 18th century until they were demolished or changed out of all recognition. Architects and builders, finances and below-stairs life are all described.' Susan Hinton (Regency Society's Membership Secretary) and one of the authors will be introducing the book with copies on sale at the event.



MEMBERSHIP

Just a reminder if you have not paid your membership for this year.

- ❖ £5 for Household Membership,
- ❖ £15 for Business Membership.

Optional Donations have also proven a popular way of helping RSC do more for you and the local community.

There are lots of ways that you can pay your membership:

- ❖ Membership form attached, send cash or cheque payable to Regency Squares Community, to 14 Stone Street BN1 2HB.
- ❖ Bank Transfer to Regency Squares Community. Account No: 30071320 Sort Code: 09-01-29
- ❖ Credit card on our website at <https://regencybrighton.com>

Thank you - we value your support



REGENCY SQUARES COMMUNITY

THANK YOU FOR YOUR CONTINUED
SUPPORT!

NOVEMBER 2024

rsc@regencybrighton.com

